

# Showroom / Warehouse / Office: 7812 E. ACOMA DRIVE

## Lease Information

Suite 8: 9,147 ± SF Total

### First Floor

4,496 ± SF Showroom

1,461 ± SF Warehouse

### Second Floor Mezzanine

3,190 ± SF Showroom

**\$.95 PSF NNN**

**Tenant Improvements Available**

## Property Information

Immediate Availability  
Excellent Scottsdale Airpark Location  
Showroom with Mezzanine  
Warehouse 24' Ceiling Height  
Overhead Door  
100% Air-Conditioned  
Common Truckwell  
I-1 Zoning - City of Scottsdale



[www.acomabusinesscenter.com](http://www.acomabusinesscenter.com)



# AIRPORT PROPERTY

Specialists, LLC



**480 483-1985**

**John Meyer 602 430-0731**

**[John@airportproperty.com](mailto:John@airportproperty.com)**

# 7812 E. ACOMA DRIVE, SCOTTSDALE AIRPARK

**9,147 ± SF Total**

**First Floor**

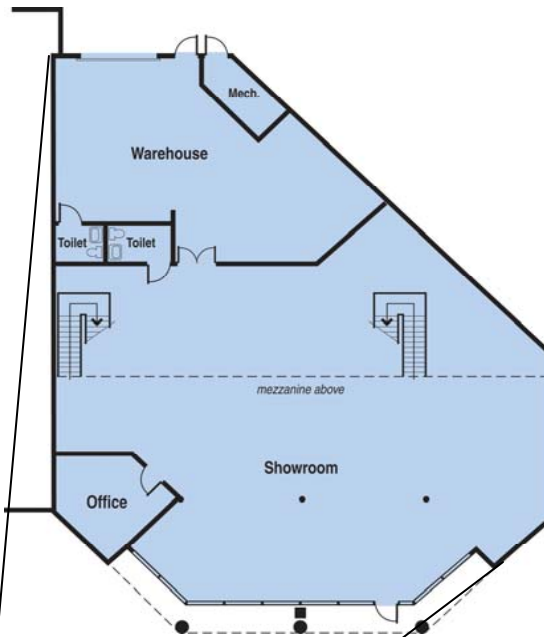
4,496 ± SF Showroom

1,461 ± SF Warehouse

**Second Floor Mezzanine**

3,190 ± SF Showroom

**\$.95 PSF NNN**



First Floor Showroom Space



Mezzanine

**AIRPORT PROPERTY**

*Specialists, LLC*



**480 483-1985**

**John Meyer 602 430-0731**

**[John@airportproperty.com](mailto:John@airportproperty.com)**